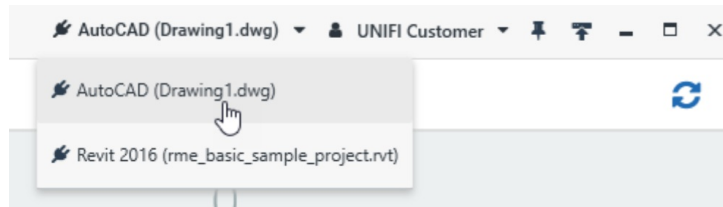


# Using UNIFI with AutoCAD

Last Modified on 10/28/2021 10:11 am EDT

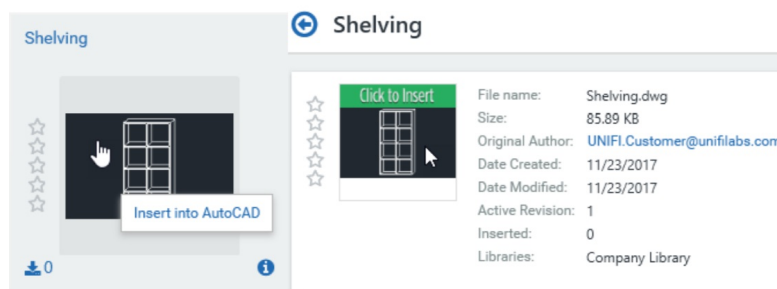
UNIFI now offers AutoCAD support for years 2016 and newer, as well as Architecture, MEP, and Civil 3D.

Prior to following the steps below, ensure that AutoCAD is running and a drawing file is loaded. If AutoCAD and Revit are both running, ensure that AutoCAD is selected in the application dropdown in UNIFI.

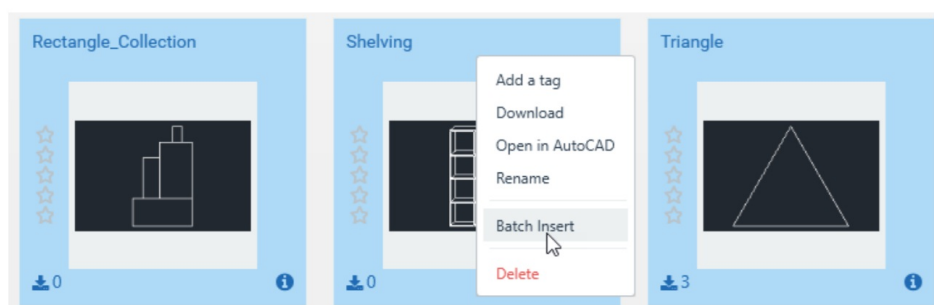


## Inserting Content

After navigating to a block in UNIFI either in [standard search](#), [browse](#), or [saved search](#), you can insert one block at a time or multiple blocks in a batch insert action. To insert one block, click on the thumbnail image in the displayed results or from within the file details page.



To insert multiple blocks, use Shift or CTRL + Click to select multiple results, then right-click on your selections, and choose **Batch Insert**.



Once an insertion has been initiated, you can also specify a rotation angle or hit either enter or spacebar to select a default rotation of zero. Additionally, drawing files saved within UNIFI can be opened in your active AutoCAD session by clicking on the files image in either the displayed results or from the file details page.

## Exporting Content from AutoCAD to UNIFI

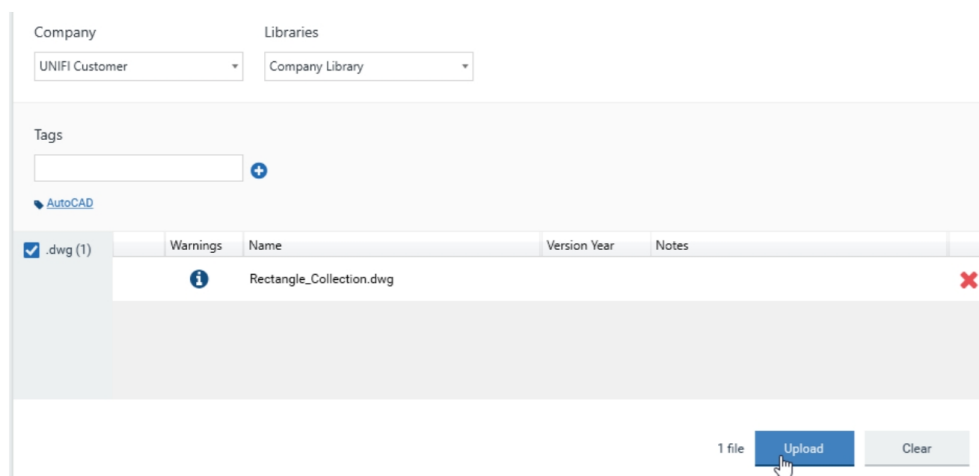
Exporting blocks to UNIFI can be done from AutoCAD either from the **Export Objects** button in the Add-ins ribbon or by typing the command "ExportBlocks".



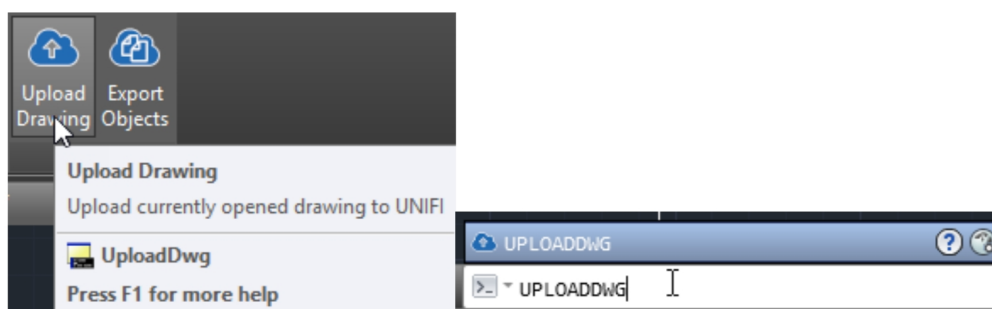
With the command initiated, you can either select a pre-defined block or create a block out of individual objects:

- To export a **pre-defined block** after initiating the command, first select the block to upload, and press Enter or Spacebar.
- To **create and export a block out of individual objects** after initiating the command, select each object that will make up the new block, then press Enter or Spacebar. In the command line, enter a name for this new block, and press Enter or Spacebar.

After completing the command, the exported object will be listed on UNIFI's Upload Content page. To upload content to the UNIFI cloud, select at least one library, add a tag (not required), and then press the **Upload** button.



To export a drawing to UNIFI, first ensure that the drawing that you would like to export is currently displayed, then either click **Upload Drawing** in the Add-ins ribbon or type the command "UploadDWG" to add the drawing to the upload screen in UNIFI.



After completing the command, the exported drawing will be listed on UNIFI's Upload Content page. To upload the content to the UNIFI cloud, select at least one library, add a tag (not required), and then press the **Upload** button.

Company

UNIFI Customer

Libraries

Company Library

Tags

+

AutoCAD

<input checked="" type="checkbox"/>	.dwg (1)	Warnings	Name	Version Year	Notes
		<div>i</div>	Drawing1.dwg		<div>✖</div>

1 file

Upload

Clear